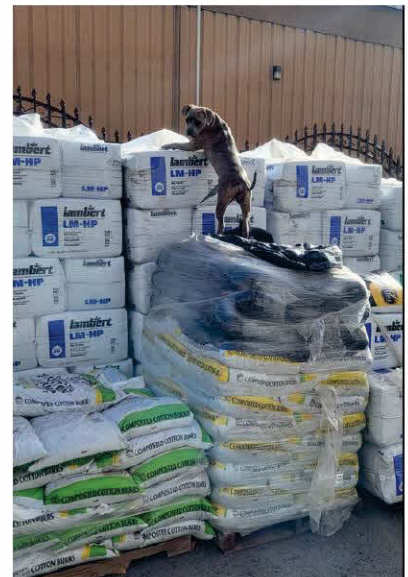
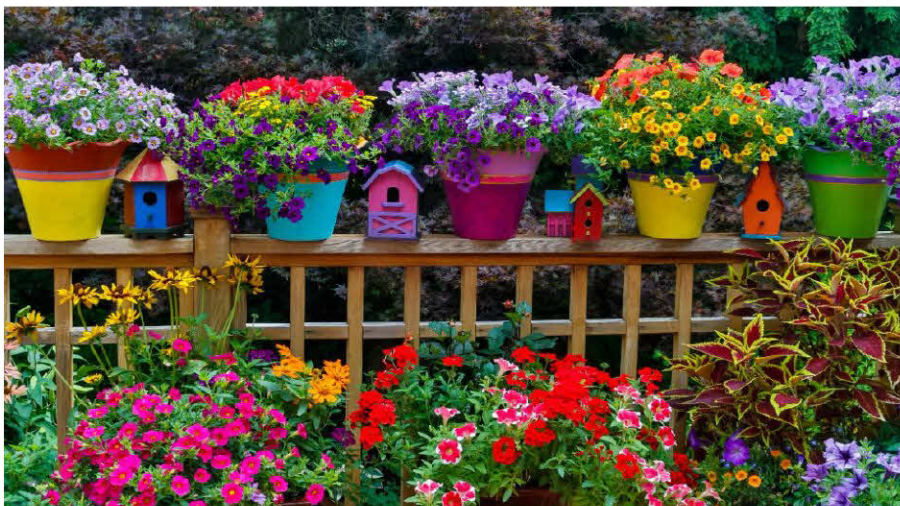


GREENHOUSE & GARDEN SUPPLY



www.GreenhouseAndGarden.com

FOR ALL YOUR GROWING NEEDS!!



Terms & Conditions



Business Hours: 8:00am to 4:30pm
Monday - Friday

Terms:

Net 30 days on approved accounts. A finance charge will be assessed on all amounts overdue. \$20.00 fee will be assessed on all returned checks. We accept credit cards shown above.

3% transaction fee will be added to all credit card payments over \$1,000.

Prices:

Prices are subject to change without notice. Call our office, or contact your salesperson for prices. Full price list may be e-mailed to commercial accounts on request.

Order Input

Orders may be input to our office via e-mail, fax, and telephone. Final orders e-mailed to our office is efficient, and gives both parties a written record of the order.

Minimum Order:

Shipped on our truck- Minimum order varies depending on distance from our warehouse.

Delivery:

We operate a delivery service to most parts of New Mexico, SW corner of Colorado, and the El Paso area. Call our office for the delivery schedule in your area. Location, physical conditions, and office hours may, or may not allow for delivery on our trucks.

We can ship on common carriers, UPS etc.

Claims:

If product is damaged by the carrier you must note on bill of lading, and file with the responsible carrier.

Delays:

We are not responsible for delays beyond our control.

Recommendations:

All recommendations given by this catalog, and Greenhouse & Garden are from recognized horticultural sources, and manufacturers. It is the responsibility of the user to determine the proper, safe use of products in a specific situation.

Returns:

Returns, on stocked items, may be made after authorization from our office, and are subject to a 20% restocking charge. Special Orders are non refundable.

Notice to Purchaser: *The following is made in lieu of all warranties expressed, or implied. The seller is not liable for any injury, loss or damage, direct or consequential, arising out of the use or inability to use the product. Before using, user shall determine the suitability of using the product for their intended use, and user assumes all risks and liability whatsoever in connection thereof. Any claims for loss or damage in the use of this product must be submitted to the manufacturer. Seller makes no recommendation, expressed or implied, on any product sold. the seller does not package, repackage, alter, formulate or manufacture the product; therefore the seller assumes no responsibility or liability whatsoever in the use of the product. The forgoing may not be changed in any matter whatsoever.*

